



STRUCTURE SYSTEMS

Šeško d.o.o. | Socka 33 | 3203 Nova Cerkev | Slovenija

+386 3 781 81 80 | info@pvcon.si

www.pvcon.si

About PVCON

Reliable mounting structures for solar energy systems

PVCON mounting systems, developed and supplied by ŠEŠKO d.o.o., provide reliable and efficient structural solutions for modern photovoltaic installations. Designed with precision and engineered for durability, these systems ensure the safe installation of solar modules across a wide range of roof types and building structures. By combining high-quality aluminium and stainless steel components with a carefully optimized modular design, PVCON systems enable fast installation, structural reliability, and a long service life.

Vision

Our vision is to contribute to the global transition to clean and sustainable energy by developing reliable and efficient mounting solutions for photovoltaic systems.

Mission

We aim to design systems that simplify installation, enhance structural safety, and ensure the long-term performance of solar power plants. Through continuous development and engineering optimization, we support installers and project developers in delivering high-quality photovoltaic systems.

Key Advantages

- Premium aluminium and stainless steel components
- Modular design for flexible installations
- Fast and efficient installation
- Compatibility with multiple roof types
- Corrosion-resistant materials
- Optimized for long-term structural performance

Engineering Philosophy

PVCON mounting systems are designed with a focus on structural reliability, efficient installation, and long-term durability. Each component is carefully engineered to ensure compatibility, corrosion resistance, and optimal load distribution. The modular system architecture enables flexible installation across multiple roof types while maintaining a minimal number of components, thereby simplifying logistics and installation.

Delivering reliability since 1938

Designed to deliver reliable performance with maximum efficiency, PVCON systems are built on a foundation of engineering precision, reliability, and continuous innovation. Since 1938, decades of experience in structural solutions have enabled us to develop products that meet the highest industry standards while adapting to evolving technological demands.

This long-standing tradition is reflected in every PVCON mounting system, combining proven engineering principles with modern design approaches. Our commitment to quality, durability, and performance ensures consistent and reliable results in real-world conditions.





Content

1 PITCHED ROOF SYSTEMS

PROFILED TILE ROOFS	5
FLAT TILE ROOFS	7
MEDITERRANEAN TILE ROOFS	9
STONE COATED METAL ROOFS	11
STANDING SEAM METAL ROOFS	13
TRAPEZOIDAL ROOFS	15
CORRUGATED ROOFS	17
BITUMEN SHINGLE ROOFS	19
FIBER CEMENT ROOFS	21
CROSS LINKING SYSTEM	23

2 FLAT ROOF SYSTEMS

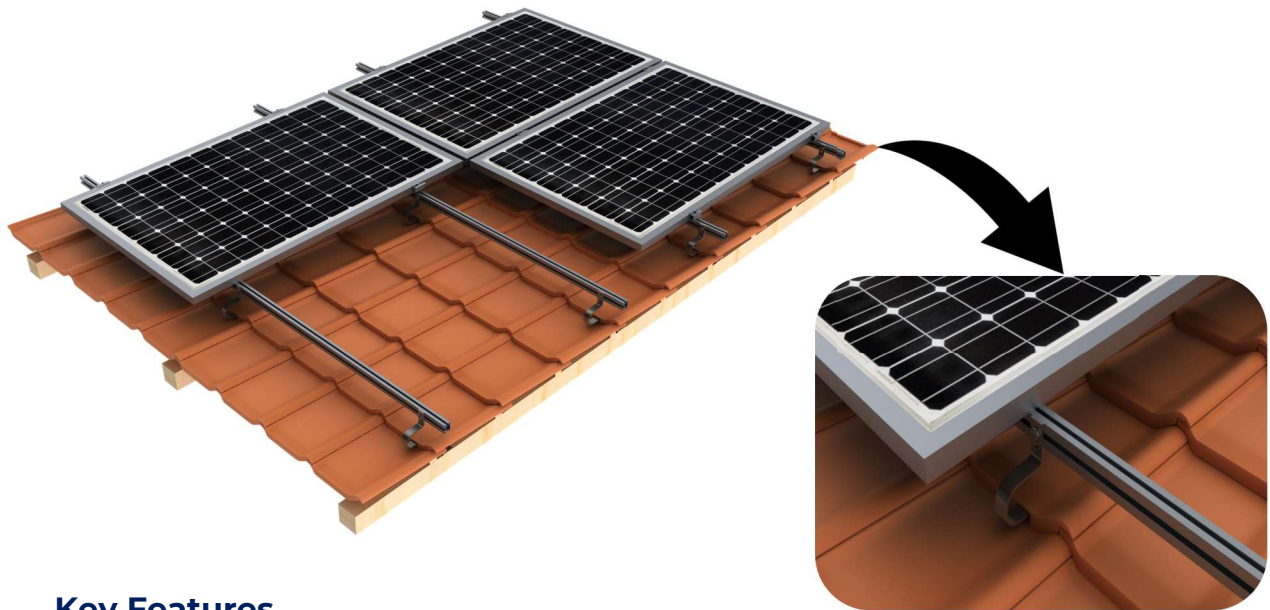
FLAT ROOF TRIANGLE SYSTEM	25
FLAT ROOF P-ULTRA	27

3 ACCESSORIES

SNOW GUARDS	29
-------------	----

1 PITCHED ROOF SYSTEMS – PROFILED TILE ROOFS

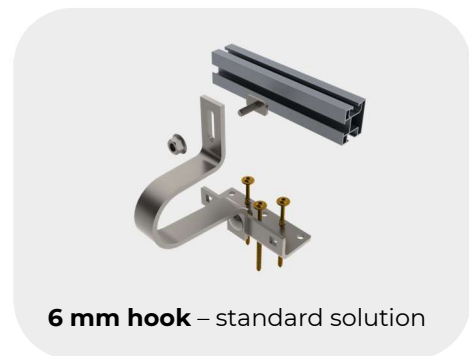
This PVCON mounting system is designed for photovoltaic installations on pitched roofs with clay or concrete profiled tiles. The system utilizes specially designed roof hooks that are securely fixed to the roof rafters. Installed beneath the roof tiles, these hooks are shaped to adapt to various tile profiles while maintaining the integrity of the roof covering.



Key Features

- ✓ **Compatible with clay and concrete tiles**
- ✓ **Adjustable hooks for different tile types**
- ✓ **Flexible solar panel positioning**
- ✓ **Sustainable and robust product**

TECHNICAL DATA	PRODUCT DESCRIPTION
Application	All pitched roofs with profiled tiles
Roof angle	From 15°
Fixture	Mounting on roof rafters
Solar panel orientation	Vertically or horizontally
Solar panel dimension	Adaptable system allows wide range of solar panel dimensions
Max. load capacity (per solar panel)	Vertical → 100 kg Horizontal → 180 kg
Max. snow load	0 - 2,4 kN/m ² (with panels)
Max. wind speed	0 - 110 km/h → zones 1, 2, 3
Height adjustment	162-194 mm (from rafter)

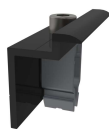


MAIN COMPONENTS – PROFILED TILE ROOFS



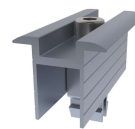
**End Clamp Silver
(Aluminium)**

532009 30-32 mm
532001 35 mm
532002 40 mm



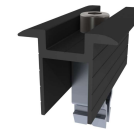
**End Clamp Black
(Aluminium)**

532011 30-32 mm
532003 35 mm
532004 40 mm



**Middle Clamp Silver
(Aluminium)**

532010 30-32 mm
532005 35 mm
532006 40 mm



**Middle Clamp Black
(Aluminium)**

532012 30-32 mm
532007 35 mm
532008 40 mm



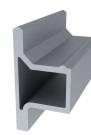
**Profile 43x35mm Silver
(Aluminium)**

500006 3,1 m
500001 6,2 m



**Profile 43x35mm Black
(Aluminium)**

536013 3,1 m



**43x35 mm Profile
Connector (Aluminium)**

536001 200 mm



**EJOT Self-drilling screw
(Stainless Steel)**

521008 6x25mm



**Wood Screw
(Galvanized)**

522001 6x100
522002 6x140
522003 6x160



**Hook 8 mm
(Stainless Steel)**

531006 Low
531002 High



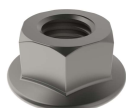
**Hook 6 mm
(Stainless Steel)**

531005 Low
531001 High



**T-Slot Bolt
(Stainless Steel)**

521010 M8/25
521009 M10/25



**Serrated Flange Nut
(Stainless Steel)**

524003 M8
524002 M10



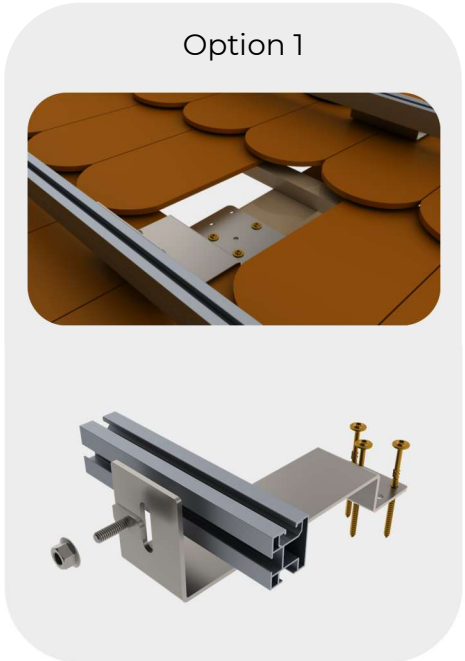
**Profile End Cap
43x35 mm (Plastic)**

590008 Grey
590009 Black

1 PITCHED ROOF SYSTEMS – FLAT TILE ROOFS

This PVCON mounting system is designed for photovoltaic installations on pitched roofs with clay tiles. It utilizes specially designed roof hooks that are securely fixed to the roof rafters. Installed beneath the roof tiles, these hooks are shaped to adapt to various tile profiles while maintaining the integrity of the roof covering. Aluminium mounting rails provide a stable support structure for photovoltaic modules and enable flexible panel positioning according to the installation layout. The modular system design ensures fast and efficient installation with a minimal number of components.

TECHNICAL DATA	PRODUCT DESCRIPTION
Application	Flat roof tiles
Roof angle	From 15°
Fixture	Mounting on roof rafters
Solar panel orientation	Vertically or horizontally
Solar panel dimension	Adaptable system allows wide range of solar panel dimensions
Max. load capacity (per solar panel)	Vertical → 100 kg Horizontal → 180 kg
Max. snow load	0-2,4 kN/m ² (with solar panels)
Max. wind speed	0-110 km/h → zones 1, 2, 3
Height adjustment	162-194 mm (from rafter)

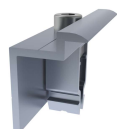


Key Features

- ✓ Solutions designed for different user requirements
- ✓ Flexible solar panel positioning
- ✓ Quick installation

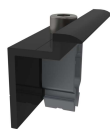


MAIN COMPONENTS – FLAT TILE ROOFS



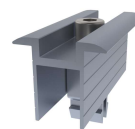
**End Clamp Silver
(Aluminium)**

532009	30-32 mm
532001	35 mm
532002	40 mm



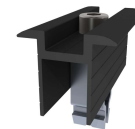
**End Clamp Black
(Aluminium)**

532011	30-32 mm
532003	35 mm
532004	40 mm



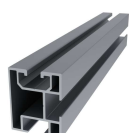
**Middle Clamp Silver
(Aluminium)**

532010	30-32 mm
532005	35 mm
532006	40 mm



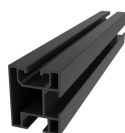
**Middle Clamp Black
(Aluminium)**

532012	30-32 mm
532007	35 mm
532008	40 mm



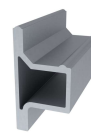
**Profile 43x35mm Silver
(Aluminium)**

500006	3,1 m
500001	6,2 m



**Profile 43x35mm Black
(Aluminium)**

536013	3,1 m
--------	-------



**43x35 mm Profile
Connector (Aluminium)**

536001	200 mm
--------	--------



**EJOT Self-drilling screw
(Stainless Steel)**

521008	6x25mm
--------	--------



**Bobrovec Roof Tile
(Aluminium)**

531014	204x409 mm
--------	------------



**Clay Tile Hook
(Stainless Steel)**

531008	S = 2 mm
--------	----------



**Clay Tile Hook
(Stainless Steel)**

531015	S = 4 mm
--------	----------



**Hook 6 mm
(Stainless Steel)**

531005	Low
531001	High



**Hook 8 mm
(Stainless Steel)**

531006	Low
531002	High



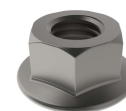
**Wood Screw
(Galvanized)**

522001	6x100
522002	6x140
522003	6x160



**T-Slot Bolt
(Stainless Steel)**

521010	M8/25
521009	M10/25

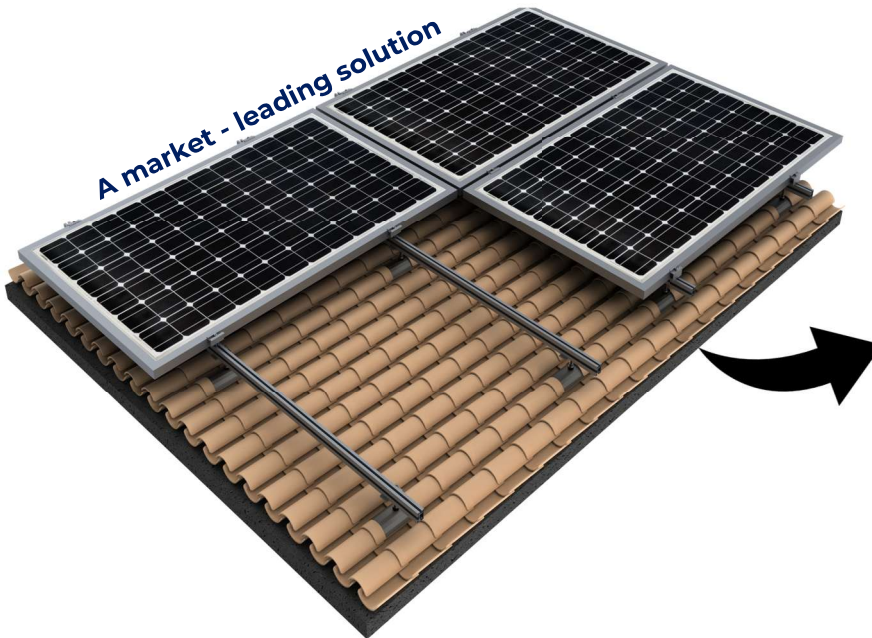


**Serrated Flange Nut
(Stainless Steel)**

524003	M8
524002	M10

1 PITCHED ROOF SYSTEMS – MEDITERRANEAN TILE ROOFS

This PVCON mounting system is designed for photovoltaic installations on pitched roofs covered with Mediterranean tiles. Depending on the roof configuration, the system can be installed using roof hooks fixed directly to the rafters or hanger bolts mounted through a replacement tile. Both solutions ensure a secure connection to the roof substructure while preserving the integrity and weather protection of the roof covering.

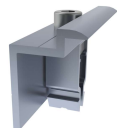


TECHNICAL DATA	PRODUCT DESCRIPTION
Application	All Mediterranean style roof tiles
Roof angle	From 10°
Fixture	Mounting on wooden or concrete substructure
Solar panel orientation	Vertically or horizontally
Solar panel dimension	Adaptable system allows wide range of solar panel dimensions
Max. load capacity (per solar panel)	Vertical → 100 kg Horizontal → 180 kg
Max. snow load	0 - 2,4 kN/m ² (with panels)
Max. wind speed	0 - 110 km/h → zones 1, 2, 3
Height adjustment	Depends on the assembled hanger bolt

Key Features

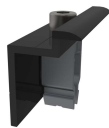
- ✓ **Optimized for Mediterranean tile roofs**
- ✓ **Simplified installation solution**
- ✓ **Sustainable and robust product**
- ✓ **Flexible panel positioning**
- ✓ **Long - term durability**

MAIN COMPONENTS – MEDITERRANEAN TILE ROOFS



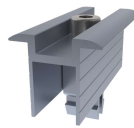
**End Clamp Silver
(Aluminium)**

532009 30-32 mm
532001 35 mm
532002 40 mm



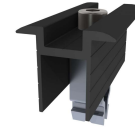
**End Clamp Black
(Aluminium)**

532011 30-32 mm
532003 35 mm
532004 40 mm



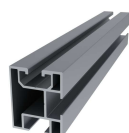
**Middle Clamp Silver
(Aluminium)**

532010 30-32 mm
532005 35 mm
532006 40 mm



**Middle Clamp Black
(Aluminium)**

532012 30-32 mm
532007 35 mm
532008 40 mm



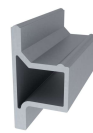
**Profile 43x35mm Silver
(Aluminium)**

500006 3,1 m
500001 6,2 m



**Profile 43x35mm Black
(Aluminium)**

536013 3,1 m



**43x35 mm Profile
Connector (Aluminium)**

536001 200 mm



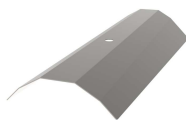
**EJOT Self - drilling screw
(Stainless Steel)**

521008 6x25mm



**Hook Korec
(Stainless Steel)**

531004 S = 6 mm



**Korec Roof Tile
(Stainless Steel)**

531013 150x100x300



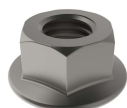
**Hanger Bolt
(Stainless Steel)**

523001 M10x160
523008 M10x200
523003 M10x250



**Wood Screw
(Galvanized)**

522001 6x100
522002 6x140
522003 6x160



**Serrated Flange Nut
(Stainless Steel)**

524003 M8
524002 M10



**T - Slot Bolt
(Stainless Steel)**

521010 M8/25
521009 M10/25



**Profile End Cap
43x35 mm (Plastic)**

590008 Grey
590009 Black

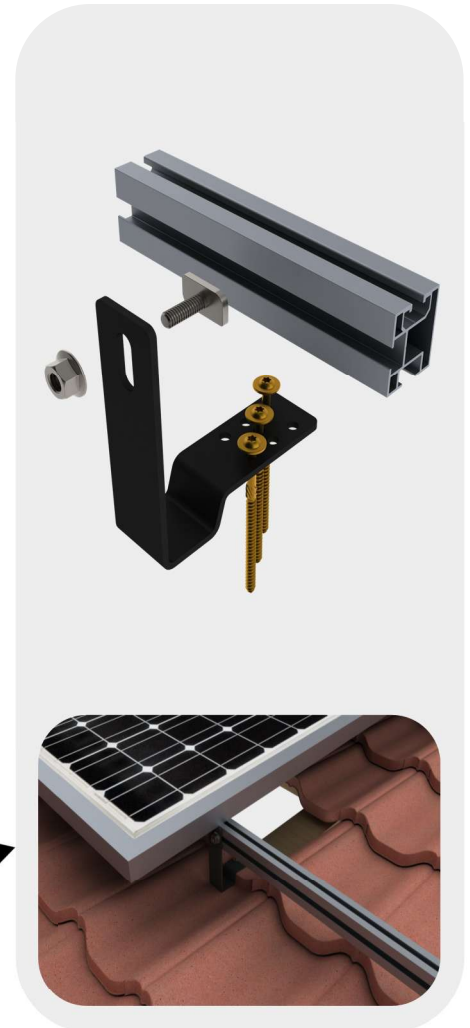
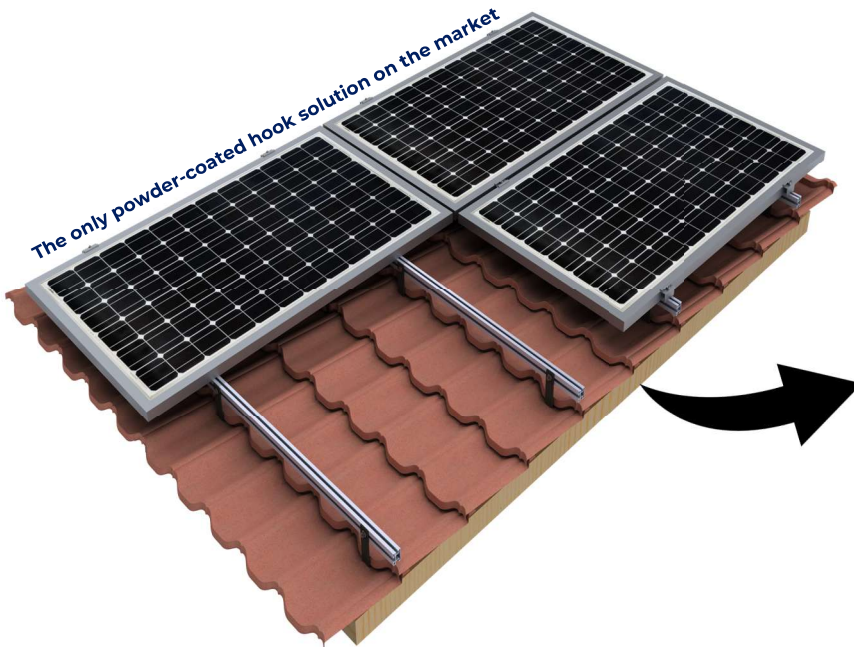


**Hanger Bolt Plate
(Stainless Steel)**

535002 M10
535003 M12

1 PITCHED ROOF SYSTEMS – STONE COATED METAL ROOFS

The PVCON mounting system is designed for photovoltaic installations on pitched roofs with sanded metal roof tiles. The system uses specially designed mounting brackets that are securely fixed to the roof rafters or other structural elements of the roof substructure. The mounting components are shaped to adapt to the profile of metal roof tiles while maintaining the integrity and weather resistance of the roof covering.

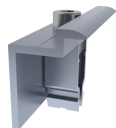


Key Features

- ✓ **Optimized for Stone Coated Metal Roofs**
- ✓ **Powder-coated hook as required by roof manufacturers**
- ✓ **Flexible panel positioning**
- ✓ **Sustainable and robust product**
- ✓ **Long - term durability**
- ✓ **Quick installation**

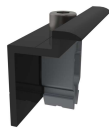
TECHNICAL DATA	PRODUCT DESCRIPTION
Application	All sanded metallic roof panels
Roof angle	From 15°
Fixture	Mounting on roof rafters
Solar panel orientation	Vertically or horizontally
Solar panel dimension	Adaptable system allows wide range of solar panel dimensions
Max. load capacity (per solar panel)	Vertical → 100 kg Horizontal → 180 kg
Max. snow load	0 - 2,4 kN/m ² (with panels)
Max. wind speed	0 - 110 km/h → zones 1, 2, 3
Height adjustment	140 mm (from rafter)

MAIN COMPONENTS – STONE COATED METAL ROOFS



**End Clamp Silver
(Aluminium)**

532009 30-32 mm
532001 35 mm
532002 40 mm



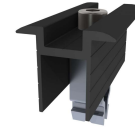
**End Clamp Black
(Aluminium)**

532011 30-32 mm
532003 35 mm
532004 40 mm



**Middle Clamp Silver
(Aluminium)**

532010 30-32 mm
532005 35 mm
532006 40 mm



**Middle Clamp Black
(Aluminium)**

532012 30-32 mm
532007 35 mm
532008 40 mm



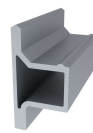
**Profile 43x35mm Silver
(Aluminium)**

500006 3,1 m
500001 6,2 m



**Profile 43x35mm Black
(Aluminium)**

536013 3,1 m



**43x35 mm Profile
Connector (Aluminium)**

536001 200 mm



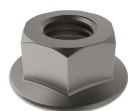
**EJOT Self-drilling screw
(Stainless Steel)**

521008 6x25mm



**Hook Gerard
(Stainless Steel Painted)**

531003 S = 4 mm



**Serrated Flange Nut
(Stainless Steel)**

524003 M8
524002 M10



**T-Slot Bolt
(Stainless Steel)**

521010 M8/25
521009 M10/25



**Wood Screw
(Galvanized)**

522001 6x100
522002 6x140
522003 6x160

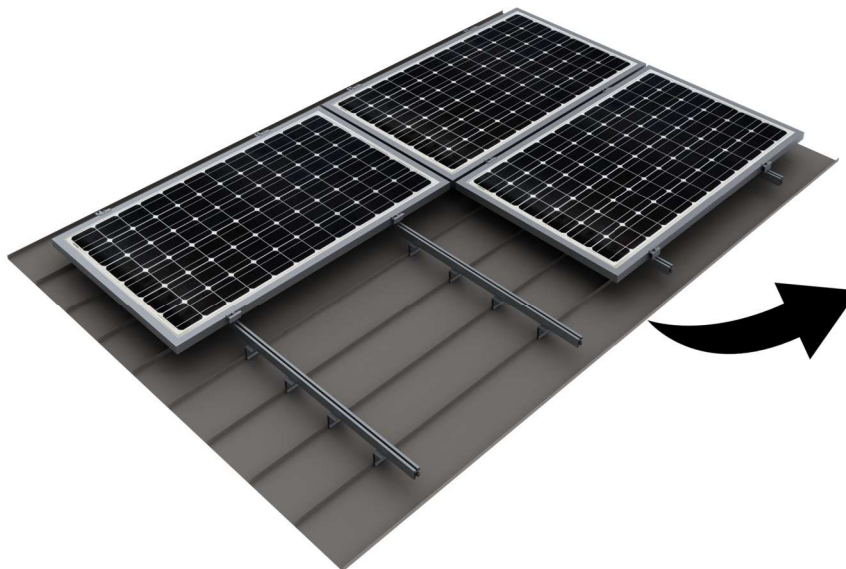


**Profile End Cap
43x35 mm (Plastic)**

590008 Grey
590009 Black

1 PITCHED ROOF SYSTEMS – STANDING SEAM METAL ROOFS

This PVCON mounting system is designed for photovoltaic installations on pitched roofs covered with standing seam metal sheets. It utilizes specially designed seam clamps that are securely attached to the standing seams without penetrating the roof covering. This non-penetrating solution preserves the integrity and weatherproofing of the roof while providing a reliable connection to the mounting structure.

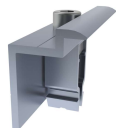


TECHNICAL DATA	PRODUCT DESCRIPTION
Application	Standing seam metal roofs (steel)
Roof angle	From 15°
Fixture	Mounting on standing seam
Solar panel orientation	Vertically or horizontally
Solar panel dimension	Adaptable system allows wide range of solar panel dimensions
Max. load capacity (per solar panel)	Vertical → 100 kg Horizontal → 180 kg
Max. snow load	0-2,4 kN/m ² (with panels)
Max. wind speed	0-110 km/h → zones 1, 2, 3
Other	Not suitable for aluminium standing seam roofs

Key Features

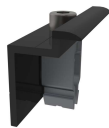
- ✓ **Optimized for standing seam metal roofs**
- ✓ **Flexible panel positioning**
- ✓ **Sustainable and robust product**
- ✓ **Market - leading solution**
- ✓ **Long - term durability**
- ✓ **Quick installation**

MAIN COMPONENTS – STANDING SEAM METAL ROOFS



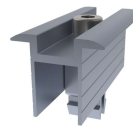
**End Clamp Silver
(Aluminium)**

532009	30-32 mm
532001	35 mm
532002	40 mm



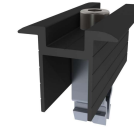
**End Clamp Black
(Aluminium)**

532011	30-32 mm
532003	35 mm
532004	40 mm



**Middle Clamp Silver
(Aluminium)**

532010	30-32 mm
532005	35 mm
532006	40 mm



**Middle Clamp Black
(Aluminium)**

532012	30-32 mm
532007	35 mm
532008	40 mm



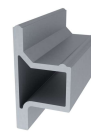
**Profile 43x35mm Silver
(Aluminium)**

500006	3,1 m
500001	6,2 m



**Profile 43x35mm Black
(Aluminium)**

536013	3,1 m
--------	-------



**43x35 mm Profile
Connector (Aluminium)**

536001	200 mm
--------	--------



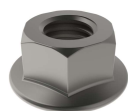
**EJOT Self - drilling screw
(Stainless Steel)**

521008	6x25mm
--------	--------



**Hook Folc
(Stainless Steel)**

531007



**Serrated Flange Nut
(Stainless Steel)**

524003	M8
524002	M10



**T - Slot Bolt
(Stainless Steel)**

521010	M8/25
521009	M10/25

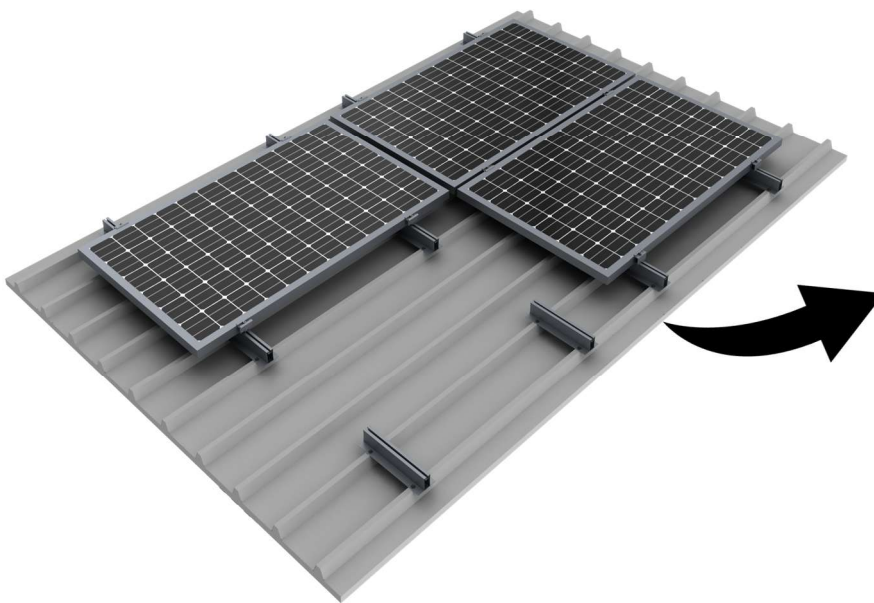


**Profile End Cap
43x35 mm (Plastic)**

590008	Grey
590009	Black

1 PITCHED ROOF SYSTEMS – TRAPEZOIDAL ROOFS

This PVCON mounting system is designed for photovoltaic installations on pitched roofs covered with trapezoidal metal sheets. It utilizes specially designed mounting brackets that are fixed directly to the roof structure through the trapezoidal sheet using appropriate fastening and sealing components. This solution ensures a secure connection to the roof substructure while maintaining the weather resistance of the roof covering.

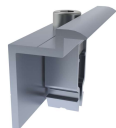


Key Features

- ✓ Optimized for trapezoidal roofs
- ✓ 55 mm profile height enables optimizer installation
- ✓ 55 mm profile height ensures better solar system cooling
- ✓ Pre - applied EPDM tape
- ✓ Sustainable and robust product
- ✓ Quick installation

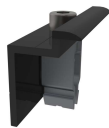
TECHNICAL DATA	PRODUCT DESCRIPTION
Application	On all angular roofs with trapezoidal panels
Roof angle	All angles
Fixture	Direct fastening to the trapezoidal sheet
Solar panel orientation	Vertically or horizontally
Solar panel dimension	Adaptable system allows wide range of solar panel dimensions
Max. load capacity (per solar panel)	Vertical → 100 kg Horizontal → 180 kg
Max. snow load	0 - 2,4 kN/m ² (with panels)
Max. wind speed	0 - 110 km/h → zones 1, 2, 3

MAIN COMPONENTS – TRAPEZOIDAL ROOFS



**End Clamp Silver
(Aluminium)**

532009	30-32 mm
532001	35 mm
532002	40 mm



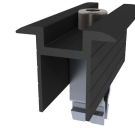
**End Clamp Black
(Aluminium)**

532011	30-32 mm
532003	35 mm
532004	40 mm



**Middle Clamp Silver
(Aluminium)**

532010	30-32 mm
532005	35 mm
532006	40 mm



**Middle Clamp Black
(Aluminium)**

532012	30-32 mm
532007	35 mm
532008	40 mm



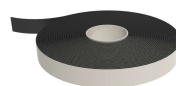
**Trapez Profil
(Aluminium + EPDM)**

536019	L=355mm, H=55mm
536020	L=555mm, H=55mm



**Trapez Profil
(Aluminium)**

536014	L=355mm, H=30mm
536002	L=355mm, H=55mm
536004	L=6200mm, H=55mm



Tape (Butyl)

590006	20x2x20m
--------	----------

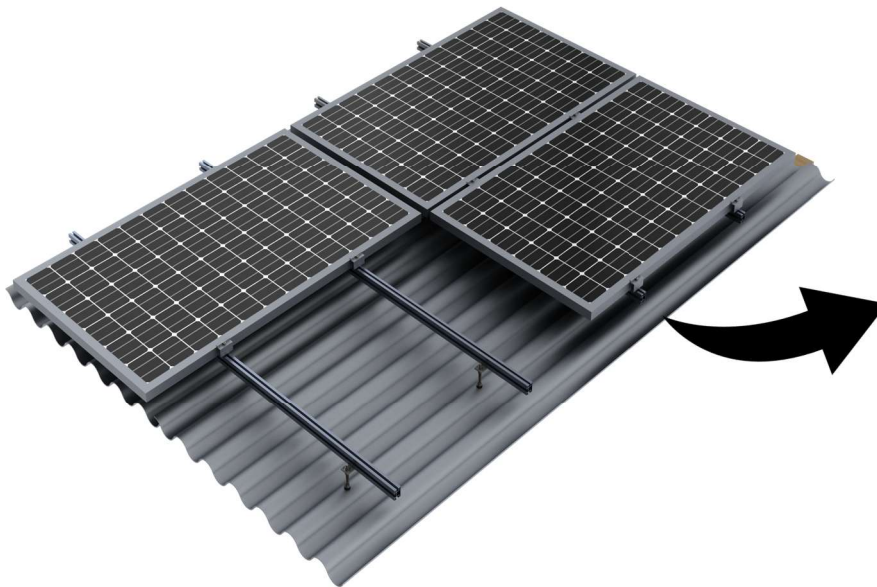


**EJOT Self - drilling screw
(Stainless Steel)**

521008	6x25mm
--------	--------

1 PITCHED ROOF SYSTEMS – CORRUGATED ROOFS

This PVCON mounting system is designed for photovoltaic installations on pitched roofs covered with corrugated fibre cement sheets. It utilizes hanger bolts that are securely fixed to the roof rafters. The bolts are installed through the corrugated roofing sheets using appropriate sealing components to ensure watertightness and maintain the integrity of the roof covering.

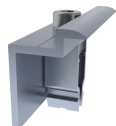


TECHNICAL DATA	PRODUCT DESCRIPTION
Application	All sheet metal roofs and corrugated roofs
Roof angle	From 15°
Fixture	Mounting on steel or wooden roof rafters
Solar panel orientation	Vertically or horizontally (with Cross Linking System)
Solar panel dimension	Adaptable system allows wide range of solar panel dimensions
Max. load capacity (per solar panel)	Vertical → 100 kg Horizontal → 180 kg
Max. snow load	0 - 2,4 kN/m ² (with panels and Cross Linking System)
Max. wind speed	0 - 110 km/h → zones 1, 2, 3 (used with Cross Linking System)
Height adjustment	Depends on the assembled hanger bolt

Key Features

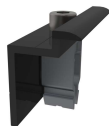
- ✓ **Optimized for metal and fibre cement (salonit) roofs**
- ✓ **Flexible panel positioning**
- ✓ **Reliable installation system**
- ✓ **Sustainable and robust product**
- ✓ **Quick installation**

MAIN COMPONENTS – CORRUGATED ROOFS



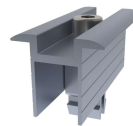
**End Clamp Silver
(Aluminium)**

532009	30-32 mm
532001	35 mm
532002	40 mm



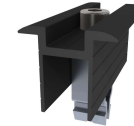
**End Clamp Black
(Aluminium)**

532011	30-32 mm
532003	35 mm
532004	40 mm



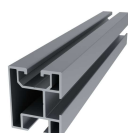
**Middle Clamp Silver
(Aluminium)**

532010	30-32 mm
532005	35 mm
532006	40 mm



**Middle Clamp Black
(Aluminium)**

532012	30-32 mm
532007	35 mm
532008	40 mm



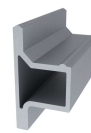
**Profile 43x35mm Silver
(Aluminium)**

500006	3,1 m
500001	6,2 m



**Profile 43x35mm Black
(Aluminium)**

536013	3,1 m
--------	-------



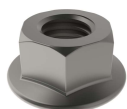
**43x35 mm Profile
Connector (Aluminium)**

536001	200 mm
--------	--------



**EJOT Self-drilling screw
(Stainless Steel)**

521008	6x25mm
--------	--------



**Serrated Flange Nut
(Stainless Steel)**

524003	M8
524002	M10



**T-Slot Bolt
(Stainless Steel)**

521010	M8/25
521009	M10/25



**Hanger Bolt
(Stainless Steel)**

523001	M10x160
523008	M10x200
523003	M10x250



**Hanger Bolt Plate
(Stainless Steel)**

535002	M10
535003	M12

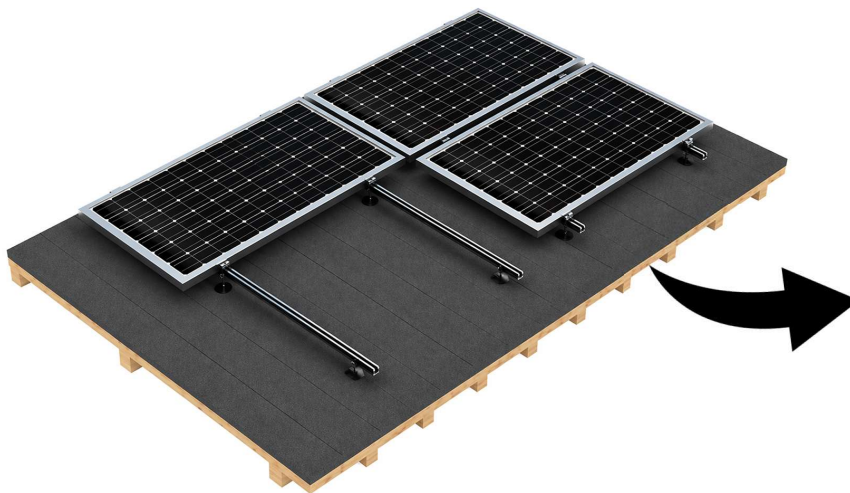


**Profile End Cap
43x35 mm (Plastic)**

590008	Grey
590009	Black

1 PITCHED ROOF SYSTEMS – BITUMEN SHINGLE ROOFS

This PVCON mounting system is designed for photovoltaic installations on pitched roofs covered with bituminous shingles. Depending on the roof structure, it can be installed using roof hooks fixed directly to the rafters or hanger bolts mounted through the roof covering. Both solutions ensure a secure connection to the roof substructure while maintaining the integrity and waterproofing of the roof covering.

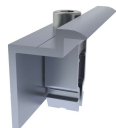


TECHNICAL DATA	PRODUCT DESCRIPTION
Application	All types of bitumen roofs
Roof angle	From 15°
Fixture	Mounting on steel or wooden rafters
Solar panel orientation	Vertically or horizontally (with Cross Linking System)
Solar panel dimension	Adaptable system allows wide range of solar panel dimensions
Max. load capacity (per solar panel)	Vertical → 100 kg Horizontal → 180 kg
Max. snow load	0 - 2,4 kN/m ² (with panels and Cross Linking System)
Max. wind speed	0 - 110 km/h → zones 1, 2, 3 (with Cross Linking System)

Key Features

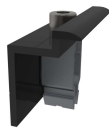
- ✓ **Optimized for bitumen roofs**
- ✓ **Flexible panel positioning**
- ✓ **Quick installation with sealant**
- ✓ **Sustainable and robust product**
- ✓ **Market - leading Solution**

MAIN COMPONENTS – BITUMEN SHINGLE ROOFS



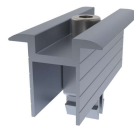
**End Clamp Silver
(Aluminium)**

532009 30-32 mm
532001 35 mm
532002 40 mm



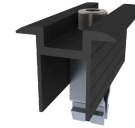
**End Clamp Black
(Aluminium)**

532011 30-32 mm
532003 35 mm
532004 40 mm



**Middle Clamp Silver
(Aluminium)**

532010 30-32 mm
532005 35 mm
532006 40 mm



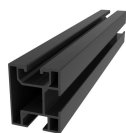
**Middle Clamp Black
(Aluminium)**

532012 30-32 mm
532007 35 mm
532008 40 mm



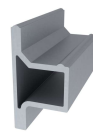
**Profile 43x35mm Silver
(Aluminium)**

500006 3,1 m
500001 6,2 m



**Profile 43x35mm Black
(Aluminium)**

536013 3,1 m



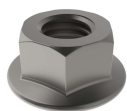
**43x35 mm Profile
Connector (Aluminium)**

536001 200 mm



**EJOT Self - drilling screw
(Stainless Steel)**

521008 6x25mm



**Serrated Flange Nut
(Stainless Steel)**

524003 M8
524002 M10



**T - Slot Bolt
(Stainless Steel)**

521010 M8/25
521009 M10/25



**Hook Tegola
(Stainless Steel)**

531011 S = 4 mm



**Profile End Cap
43x35 mm (Plastic)**

590008 Grey
590009 Black



**Hanger Bolt
(Stainless Steel)**

523001 M10x160
523008 M10x200
523003 M10x250



**Wood Screw
(Galvanized + EPDM)**

522004 6,5x50
522005 6,5x100



**Hanger Bolt Plate
(Stainless Steel)**

535002 M10
535003 M12



**Washer Tegola
(Stainless Steel)**

535001 Ø 100 mm

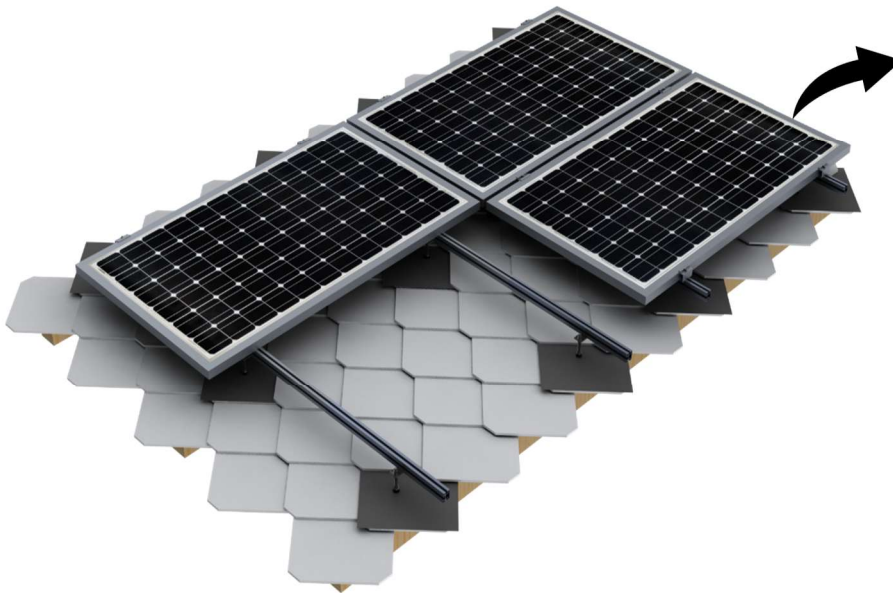


**Sealant
(Bitumen)**

590002 300 ml

1 PITCHED ROOF SYSTEMS – FIBER CEMENT ROOFS

This PVCON mounting system is designed for photovoltaic installations on pitched roofs covered with fibre cement roofing sheets. It utilizes hanger bolts that are securely fixed to the roof rafters or other structural elements of the roof substructure. The bolts are installed through a replacement roofing element to ensure proper sealing while maintaining the integrity and weather resistance of the roof covering.

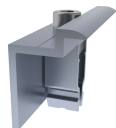


TECHNICAL DATA	PRODUCT DESCRIPTION
Application	Fiber cement sheets (Eternit)
Roof angle	From 15°
Fixture	Mounting on steel or wooden roof rafters
Solar panel orientation	Vertically or horizontally
Solar panel dimension	Adaptable system allows wide range of solar panel dimensions
Max. load capacity (per solar panel)	Vertical panel orientation → 100 kg Horizontal panel orientation → 180 kg
Max. snow load	0 - 2,4 kN/m ² (with panels and Cross Linking System)
Max. wind speed	0 - 110 km/h → zones 1, 2, 3 (with Cross Linking System)
Height adjustment	Depends on the assembled hanger bolt

Key Features

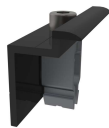
- ✓ Optimized for fiber cement roofs
- ✓ Flexible panel positioning
- ✓ Market - leading solution
- ✓ Sustainable and robust product
- ✓ Quick installation

MAIN COMPONENTS – FIBER CEMENT ROOFS



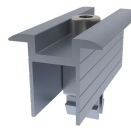
**End Clamp Silver
(Aluminium)**

532009 30-32 mm
532001 35 mm
532002 40 mm



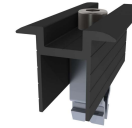
**End Clamp Black
(Aluminium)**

532011 30-32 mm
532003 35 mm
532004 40 mm



**Middle Clamp Silver
(Aluminium)**

532010 30-32 mm
532005 35 mm
532006 40 mm



**Middle Clamp Black
(Aluminium)**

532012 30-32 mm
532007 35 mm
532008 40 mm



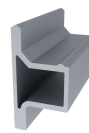
**Profile 43x35mm Silver
(Aluminium)**

500006 3,1 m
500001 6,2 m



**Profile 43x35mm Black
(Aluminium)**

536013 3,1 m



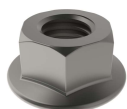
**43x35 mm Profile
Connector (Aluminium)**

536001 200 mm



**EJOT Self-drilling screw
(Stainless Steel)**

521008 6x25mm



**Serrated Flange Nut
(Stainless Steel)**

524003 M8
524002 M10



**T-Slot Bolt
(Stainless Steel)**

521010 M8/25
521009 M10/25



**Hanger Bolt
(Stainless Steel)**

523001 M10x160
523008 M10x200
523003 M10x250



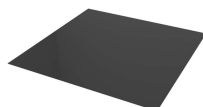
**Hanger Bolt Plate
(Stainless Steel)**

535002 M10
535003 M12



**Profile End Cap
43x35 mm (Plastic)**

590008 Grey
590009 Black

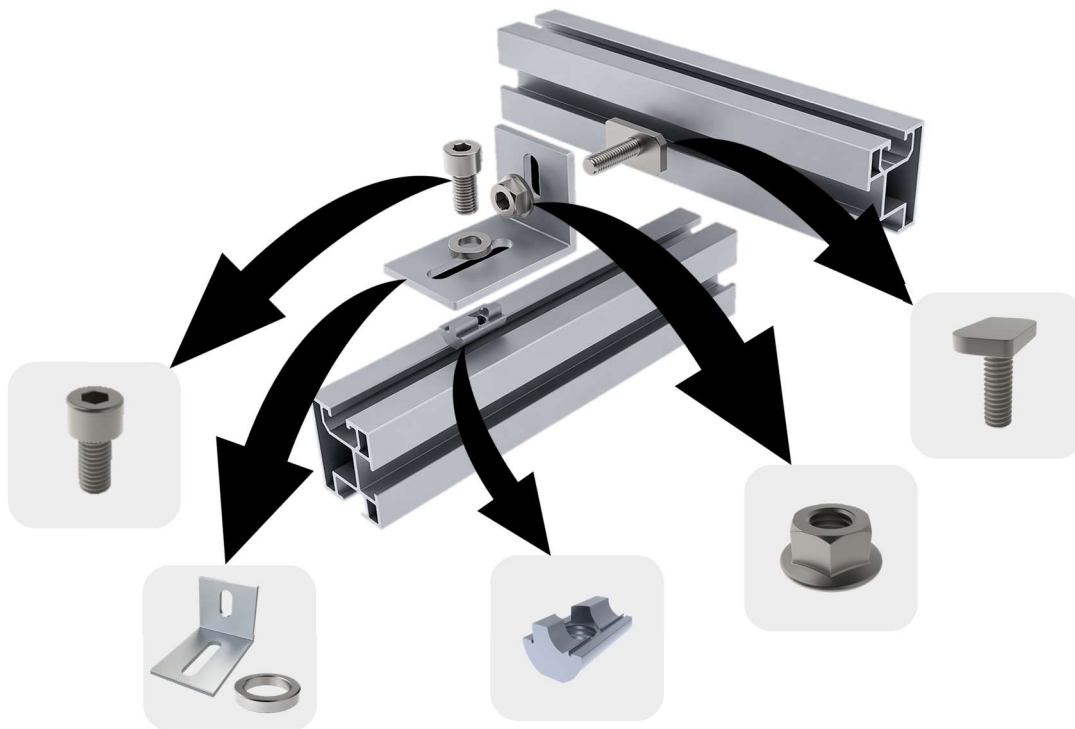


**Ethernit Roof Tile
(Painted Metal)**

580002 400x400 mm

1 PITCHED ROOF SYSTEM – CROSS LINKING SYSTEM

Cross linking system enables high positional flexibility and easy installation, even on complex roof structures. The spacing between the roof and the modules ensures proper system cooling. With two hook variants, the panels can be installed in either vertical or horizontal orientation. The system is primarily used for mounting with hanger bolts on roofs such as bitumen shingle, corrugated, and Mediterranean tile roofs.



Key Features

- ✓ **Additional structural reinforcement**
- ✓ **High load capacity**
- ✓ **Fast and easy installation**
- ✓ **Secure and stable fixation**
- ✓ **Sustainable and robust product**



MAIN COMPONENTS – CROSS LINKING SYSTEM



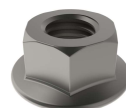
**Profile 43x35mm Silver
(Aluminium)**

500006 3,1 m
500001 6,2 m



**Profile 43x35mm Black
(Aluminium)**

536013 3,1 m



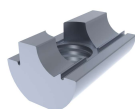
**Serrated Flange Nut
(Stainless Steel)**

524003 M8
524002 M10



**T - Slot Bolt
(Stainless Steel)**

521010 M8/25
521009 M10/25



**T - SLOT
(Aluminium)**

524004 M8



**Imbus A2 Bolt
(Stainless Steel)**

524004 M8/16

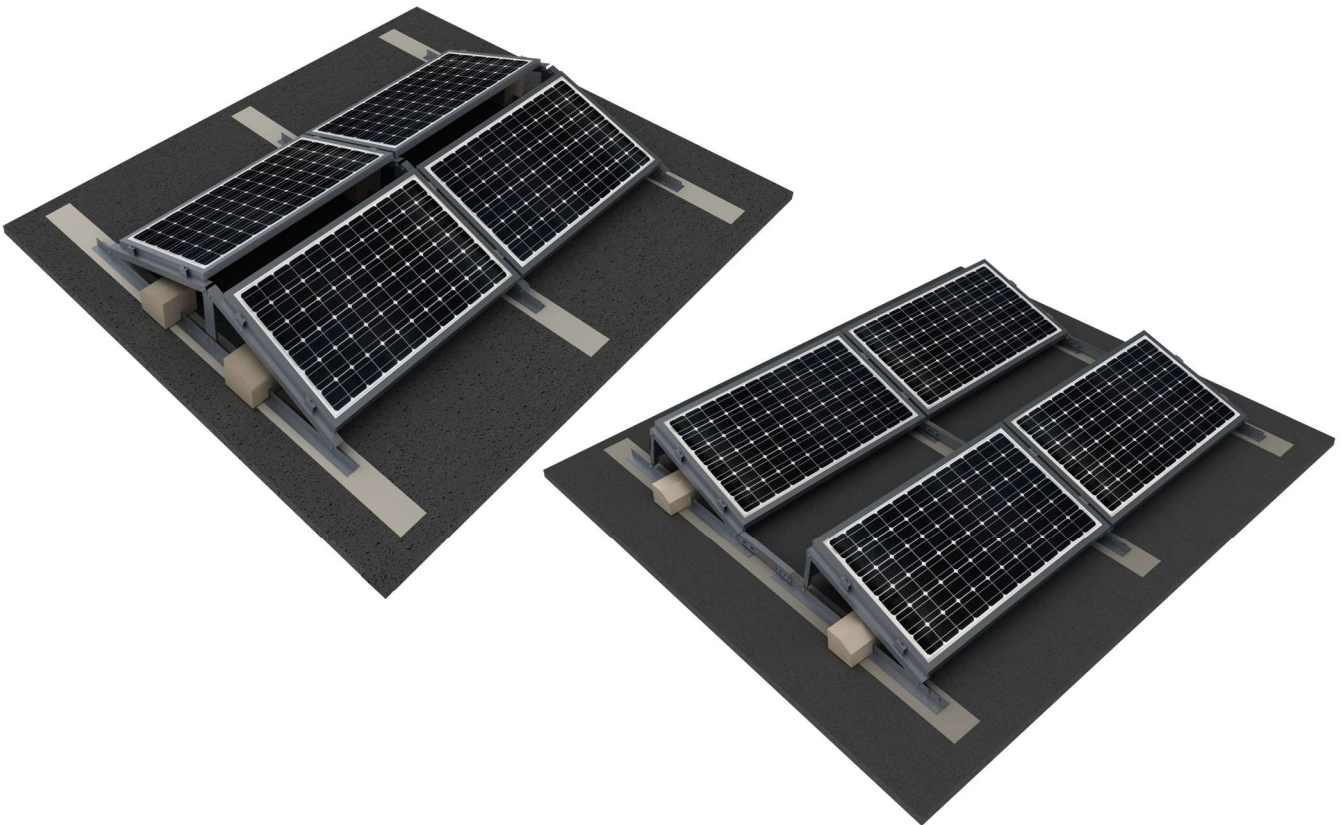


**L - Adapter + Washer
(Aluminium)**

536003 40x40x60 mm

2 FLAT ROOF SYSTEMS – TRIANGLE SYSTEM

The PVCON P-ULTRA mounting system is designed for photovoltaic installations on flat roofs up to 5°, offering flexible configurations with tilt angles of 0°, 10°, and 15°. The system supports both south-oriented and east-west layouts, enabling optimal use of available roof space. The aluminium structure ensures high stability and efficient load distribution. The modular design enables fast and efficient installation with a minimal number of components.

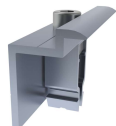


TECHNICAL DATA	PRODUCT DESCRIPTION
Application	Flat roofs
Module angle	10°, 15°, 20°
Fixture	Installation on membrane or gravel
Solar panel orientation	Horizontally
Solar panel dimension	The adaptable system allows a wide range of panels
Max. load capacity (per solar panel)	Vertical → 100 kg Horizontal → 180 kg
Max. snow load	0 - 2,4 kN/m ² (with solar panels)
Max. wind speed	0 - 110 km/h → zones 1, 2, 3

Key Features

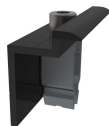
- ✓ **Pre - assembled triangle system**
- ✓ **Compatible with TPO, PVC, bitumen and gravel flat roofs**
- ✓ **Ballast with a groove for direct placement on the tilted triangle**
- ✓ **Installation without roof penetration**
- ✓ **Sustainable and robust product**

MAIN COMPONENTS – TRIANGLE SYSTEM



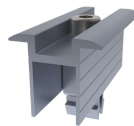
**End Clamp Silver
(Aluminium)**

532009 30-32 mm
532001 35 mm
532002 40 mm



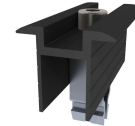
**End Clamp Black
(Aluminium)**

532011 30-32 mm
532003 35 mm
532004 40 mm



**Middle Clamp Silver
(Aluminium)**

532010 30-32 mm
532005 35 mm
532006 40 mm



**Middle Clamp Black
(Aluminium)**

532012 30-32 mm
532007 35 mm
532008 40 mm



**Triangle South
(Aluminium)**

533001 10°
533002 15°
533003 20°



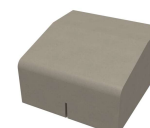
**Triangle East - West
(Aluminium)**

533040 10°
533018 15°



**Wind Shield
(Aluminium)**

533004 10°, L = 3800mm
533005 15°, L = 3800mm
533006 20°, L = 3800mm



**Ballast + Groove
(Concrete)**

580001
20,4 kg
250x155x250 mm



**Ribbon
(PVC)**

590003 W = 20 cm, L = 20m
590010 W = 30 cm, L = 20m



**Ribbon
(TPO)**

590004 W = 20 cm, L = 25m
590011 W = 30 cm, L = 25m



**Ballast
(Concrete)**

580004
9,65 kg
200x250x80 mm



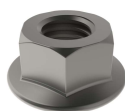
**Ballast
(Concrete)**

580010
20,4 kg
250x155x250 mm



**Concrete Screw Anchor
(Stainless Steel)**

522006 6x50mm



**Serrated Flange Nut
(Stainless Steel)**

524002 M10



**Hex Head Bolt
(Stainless Steel)**

521011 M10/25



**EJOT Self-drilling screw
(Stainless Steel)**

521008 6x25mm

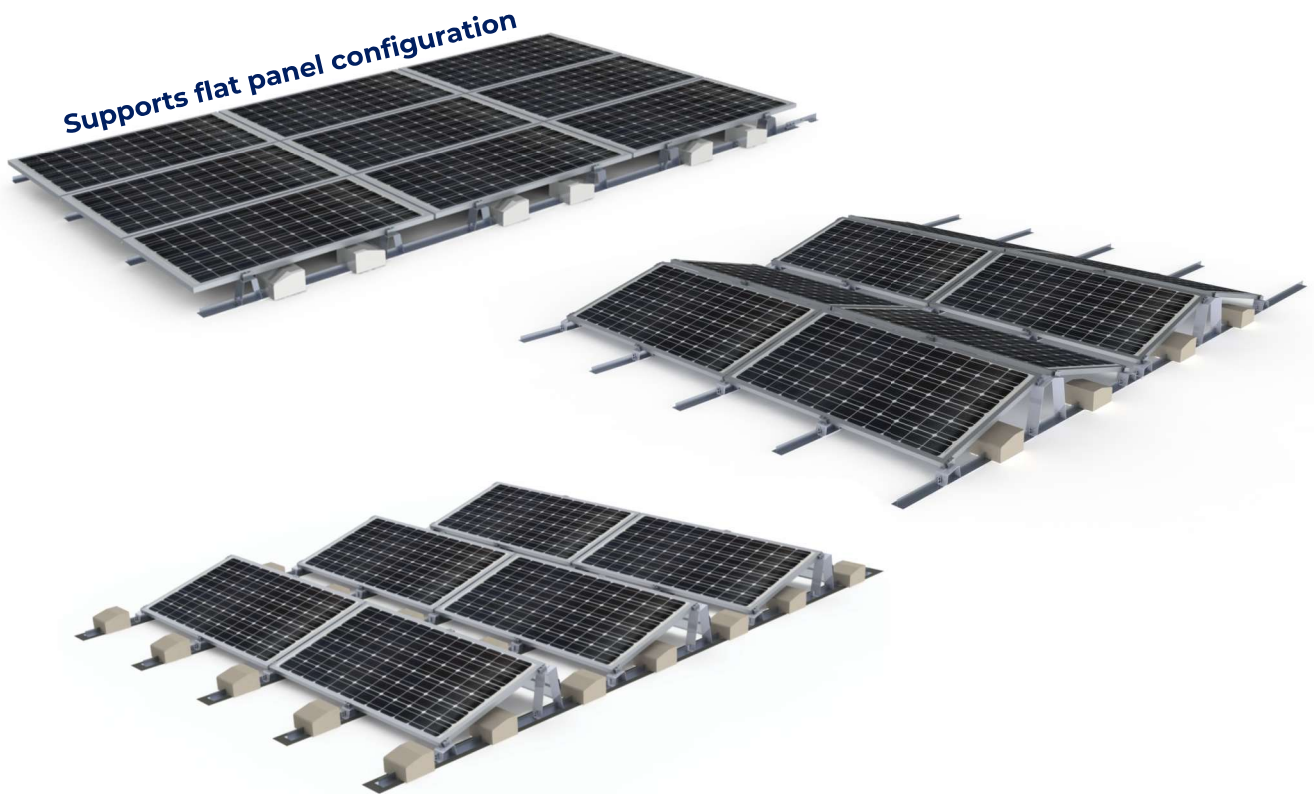


**Ballast Connection
Strap (Stainless Steel)**

580007 for 2 ballasts
580008 for 3 ballasts
580009 for 5 ballasts

2 FLAT ROOF SYSTEMS – P – ULTRA SYSTEM

The PVCON P-ULTRA mounting system is designed for photovoltaic installations on flat roofs up to 5°, offering flexible configurations with tilt angles of 0°, 10°, and 15°. The system supports both south-oriented and east-west layouts, enabling optimal use of available roof space. The aluminium structure ensures high stability and efficient load distribution. The modular design enables fast and efficient installation with a minimal number of components.

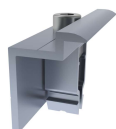


TECHNICAL DATA	PRODUCT DESCRIPTION
Application	Flat roofs
Module angle	0°, 10°, 15°
Fixture	Installation on membrane or gravel
Solar panel orientation	Horizontally
Solar panel dimension	The adaptable system allows a wide range of panels
Max. load capacity (per solar panel)	Vertical → 100 kg Horizontal → 180 kg
Max. snow load	0 - 2,4 kN/m ² (with solar panels)
Max. wind speed	0 - 110 km/h → zones 1, 2, 3

Key Features

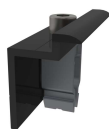
- ✓ Compatible with TPO, PVC, bitumen and gravel flat roofs
- ✓ Flexible construction positioning
- ✓ Installation without roof penetration
- ✓ Sustainable and robust product
- ✓ Quick installation

MAIN COMPONENTS – P-ULTRA SYSTEM



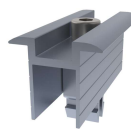
**End Clamp Silver
(Aluminium)**

532009 30-32 mm
532001 35 mm
532002 40 mm



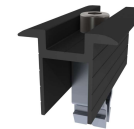
**End Clamp Black
(Aluminium)**

532011 30-32 mm
532003 35 mm
532004 40 mm



**Middle Clamp Silver
(Aluminium)**

532010 30-32 mm
532005 35 mm
532006 40 mm



**Middle Clamp Black
(Aluminium)**

532012 30-32 mm
532007 35 mm
532008 40 mm



**Flat P - ULTRA
(Aluminium)**

533014 0°



**Front P - ULTRA
(Aluminium)**

533025 10°
533012 15°



**Back P - ULTRA
(Concrete)**

533021 10°
533013 15°



**East - West P - ULTRA
(Concrete)**

533019 10°
533020 15°



**Ballast Connection
Strap (Stainless Steel)**

580007 for 2 ballasts
580008 for 3 ballasts
580009 for 5 ballasts



**T - PROFILE
(Aluminium)**

500012 L = 6000 mm



**Wind Shield
(Aluminium)**

533004 10°, L = 3800mm
533005 15°, L = 3800mm
533006 20°, L = 3800mm



**Adjustable Connector
P - ULTRA
(Aluminium)**

533024



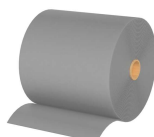
**Connector P - ULTRA
(Aluminium)**

533015 L=200 mm



**Concrete Screw Anchor
(Stainless Steel)**

522006 6x50mm



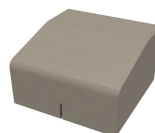
**Ribbon
(PVC)**

590003 W = 20 cm, L = 20m
590010 W = 30 cm, L = 20m



**Ribbon
(TPO)**

590004 W = 20 cm, L = 25m
590011 W = 30 cm, L = 25m



**Ballast + Groove
(Concrete)**

580001
20,4 kg
250x155x250 mm



**Ballast
(Concrete)**

580010
20,4 kg
250x155x250 mm



**EJOT Self - drilling screw
(Stainless Steel)**

521008 6x25mm

3 ACCESSORIES – SNOW GUARDS

Mid-mounted snow guard system is suitable for roof slopes from 0° to 15°. We recommend installing mid-mounted snow guards along the entire length of each row. **Important:** There is no mid-mounted snow guard on the bottom solar panels row. If snow retention is also required on the bottom row, sufficient clearance must be provided for a linear snow guard attached directly to the roof structure.

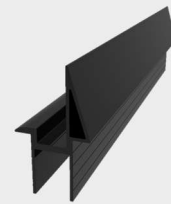


Key Features

- ✓ Quick installation with click system
- ✓ Used for landscape and portrait positioning
- ✓ Excellent snow retention
- ✓ Sustainable and robust product

TECHNICAL DATA	PRODUCT DESCRIPTION
Application	Pitched roofs
Roof angle	0° - 15°
Installation	Between solar panels
Solar panel dimension	The adaptable system allows a wide range of panels

Main components



Snow Guard Black Color (Aluminium)

534002 L = 1000 mm
534004 L = 1600 mm



Snow Guard Aluminium Color (Aluminium)

534001 L = 1000 mm
534003 L = 1600 mm





SNOW GUARDS



Šeško d.o.o. | Socka 33 | 3203 Nova Cerkev | Slovenija

+386 3 781 81 80 | info@pvcon.si

www.pvcon.si